

MATILDE alMUSEO!

Un'avventura preistorica a Casal de' Pazzi



REGIONE
LAZIO



MUSEI
IN COMUNE
ROMA

JUMPLE
CREATIVE LAB

Ritaglia e incolla le immagini per completare la storia!
Cut and paste the pictures to complete the story!



MATILDE al MUSEO!

Un'avventura preistorica a Casal de' Pazzi

Stai per entrare nel mondo di Matilde al Museo di Casal de' Pazzi!

La piccola **Sapiens Matilde** e due giovani **Neandertal, Taro e Nuna**, ti accompagneranno alla scoperta del **Pleistocene**, un tempo lontano e affascinante. La storia, ambientata ben 200.000 anni fa, può essere seguita anche senza saper leggere o conoscere l'italiano, perché saranno soprattutto le **immagini** a guidarti. Al **Museo di Casal de' Pazzi** vogliamo che chiunque possa avvicinarsi alla **Preistoria** con entusiasmo e facilità: **"imparare divertendosi"** è il nostro motto! Per questo troverai anche sticker, giochi e un QR code che presto aprirà la porta a nuovi contenuti multimediali **accessibili**. Questo **fumetto** racconta l'importanza del patrimonio preistorico nel quartiere romano di **Rebibbia-Casal de' Pazzi**, e il ruolo fondamentale delle **bambine** e dei **bambini** nella comunità. Ci mostra inoltre come la **scienza** permetta di ricostruire sempre meglio la vita nel passato e come possa aiutarci a superare **stereotipi** e **pregiudizi**.

Buona lettura e buona avventura!

You are about to enter the world of Matilde at the Casal de' Pazzi Museum!

Little Sapiens Matilde and two young **Neanderthals, Taro and Nuna**, will guide you on a journey into the **Pleistocene**, a distant and fascinating time. The story is set 200,000 years ago and can be followed even if you cannot read or do not know Italian, as the **images** will guide you. At the **Casal de' Pazzi Museum**, we want everyone to approach **Prehistory** with enthusiasm and ease: **"learning through play"** is our motto! That's why you will also find stickers, games, and a QR code that will soon open the door to new **accessible** multimedia content. This comic presents the rich prehistoric heritage of the Roman neighbourhood of **Rebibbia-Casal de' Pazzi** and the fundamental role of **children** in the community. It also shows how **science** helps us better reconstruct life in the past and aids in overcoming **stereotypes and prejudice**.

Enjoy the read and the adventure!



REGIONE
LAZIO



MUSEI
IN COMUNE
ROMA

L.R. 24/2019 Progetto realizzato in Convenzione
tra la Regione Lazio e Musei di Roma Capitale
Piano Annuale 2025.

Progetto per il **Museo di Casal de' Pazzi** (Sistema Musei Civici di Roma
Capitale, Soprintendenza Capitolina ai Beni Culturali)
Direzione e Coordinamento: **Letizia Silvestri** e **Gian Luca Zanzi**
Consulenza tecnico-scientifica: **Patrizia Gioia, Paola Bellagamba,**
Alexia Andrisani, Alisia De Stefano, Silvia Lo Presti,
Viola Quinti, Marco Bisanti

Supporto amministrativo: Servizio coordinamento e attuazione della
programmazione delle attività espositive; Servizio Coordinamento
Monumenti Antichi e Aree Archeologiche; Servizio Coordinamento
Amministrativo e Segreteria della Direzione Interventi su Edilizia
Monumentale

Con la collaborazione delle scuole dell'Infanzia dell'Istituto Comprensivo
"G. Palombini" - Plessi "Palombini", "Stucchi", "Gaslini-Palenco",
"Madre Teresa di Calcutta"

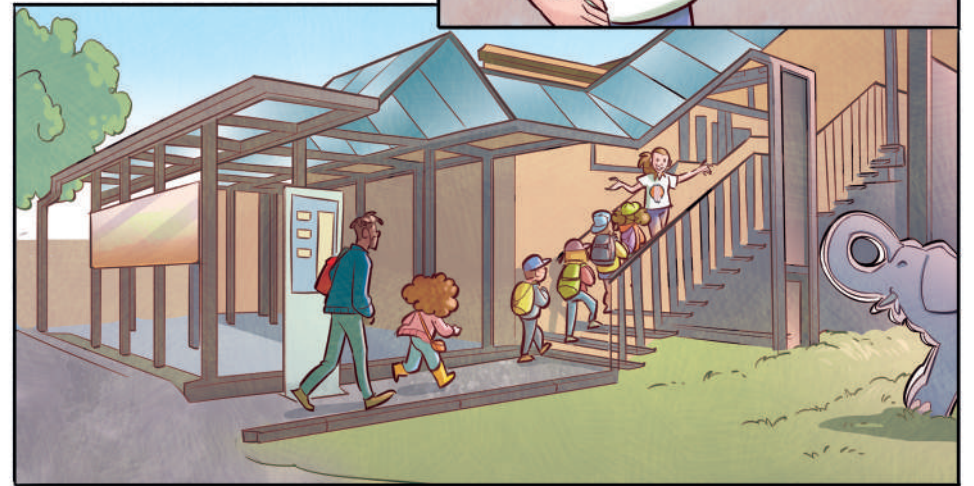
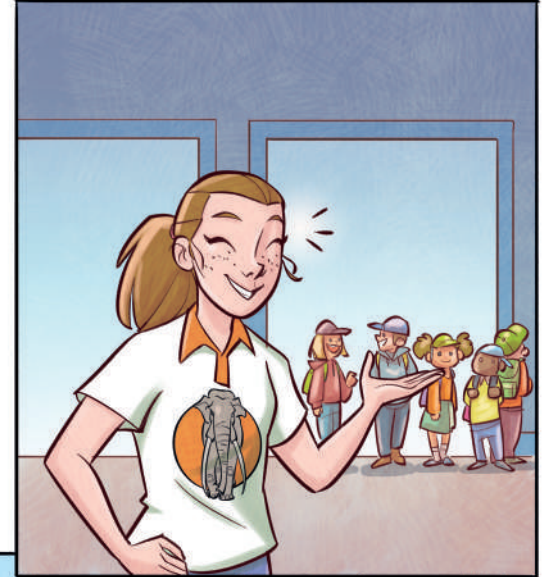
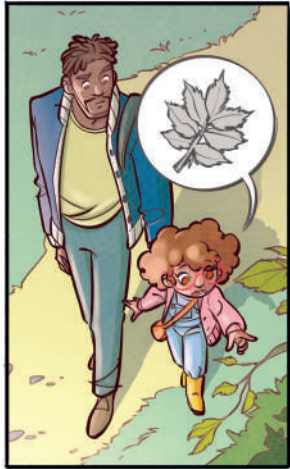
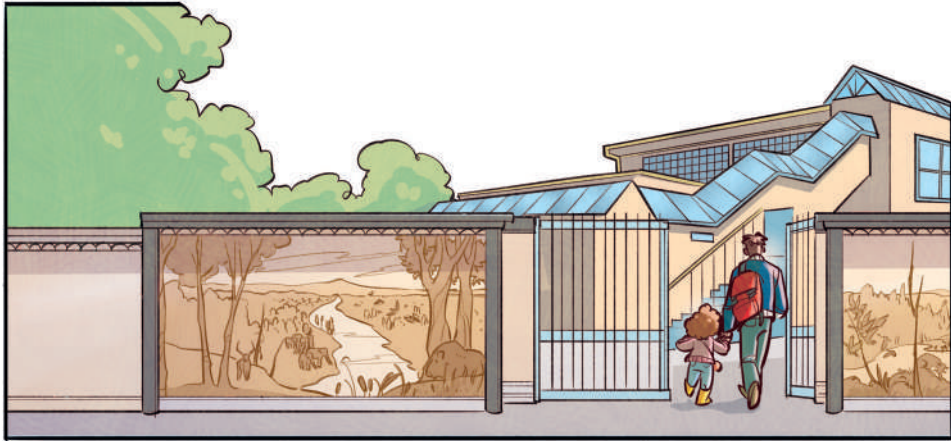
Coordinamento progetto grafico: **Jumble Creative Lab Srl**
Storia e Sceneggiatura: **Marco Pacini**

Layout: **Virginia Salucci**
Matite: **Silvia De Ventura**
Colore: **Francesca Vivaldi**
Grafica e impaginato: **Jumble Creative Lab Srl**

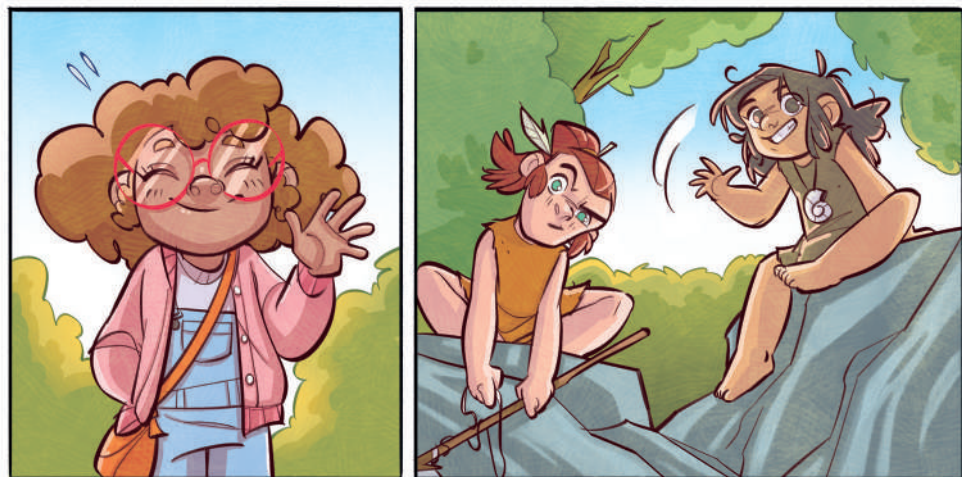
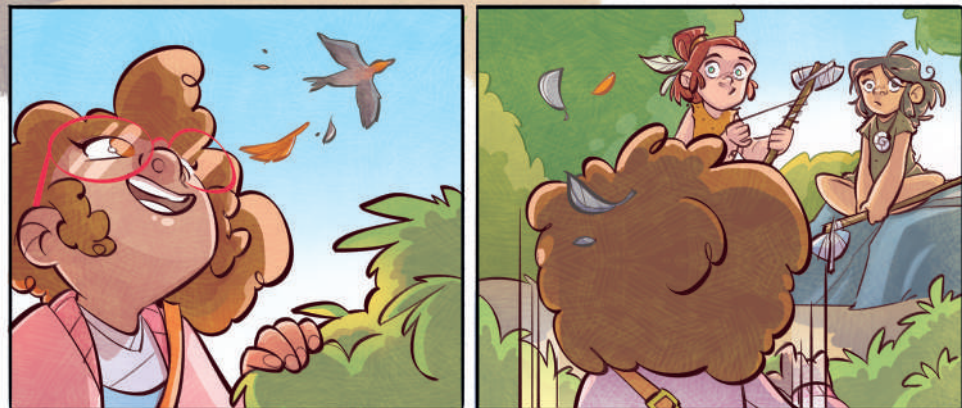
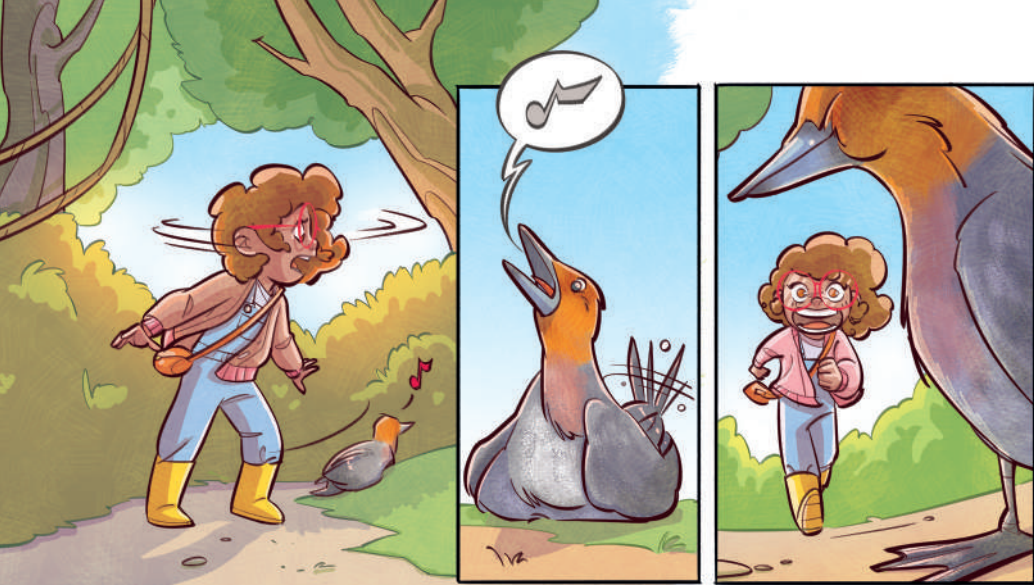
Stampa: **Distante Service Srl - PrintLab Stampa Digitale**

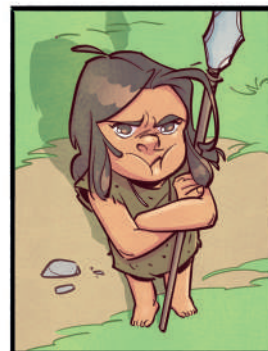
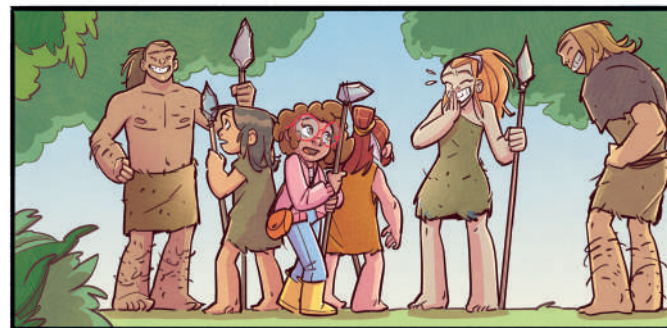
© 2025 Museo di Casal de' Pazzi

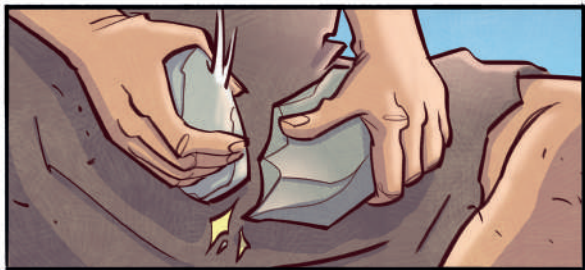
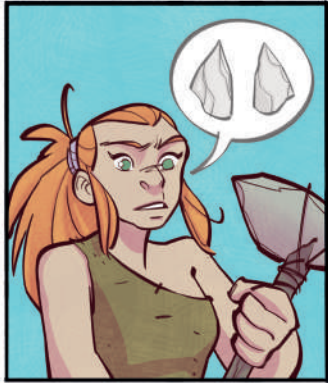


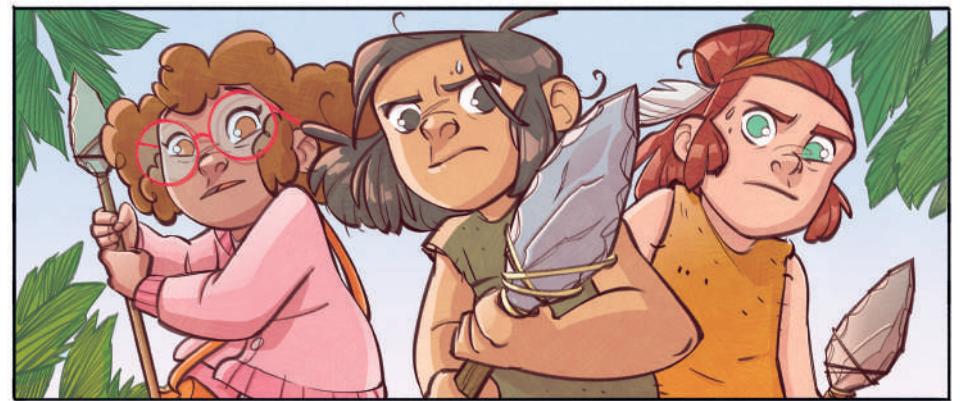
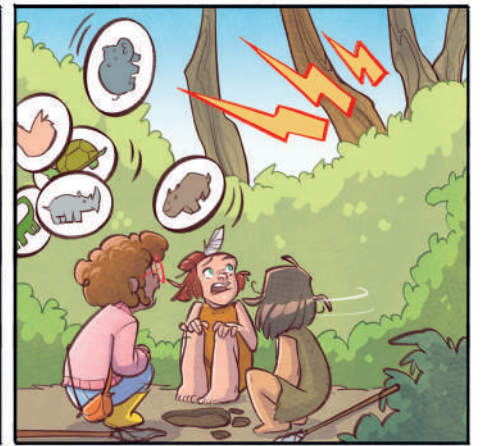
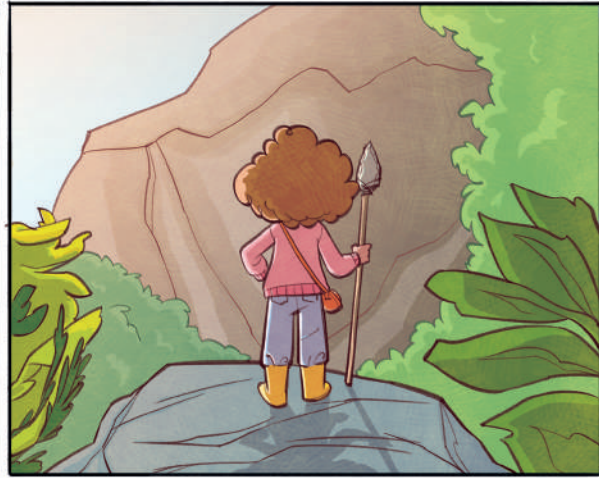


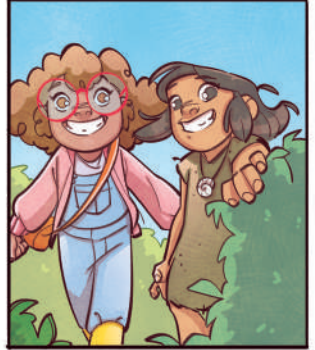
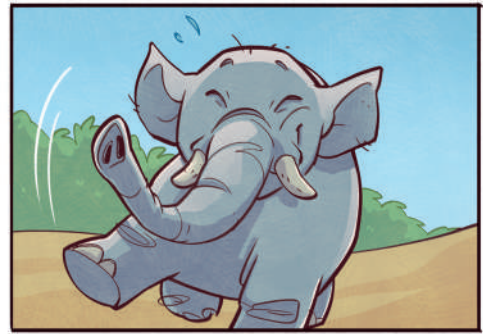
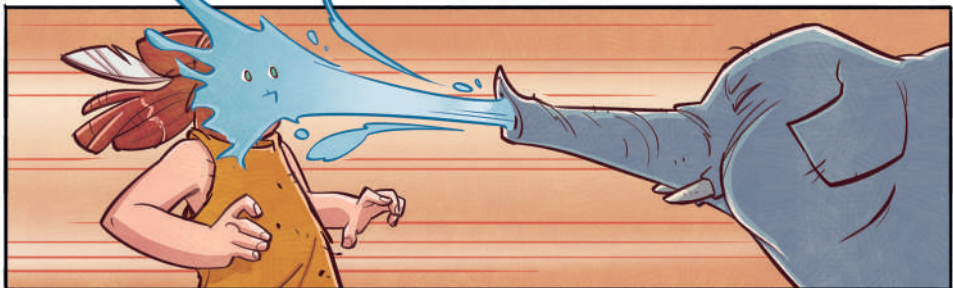
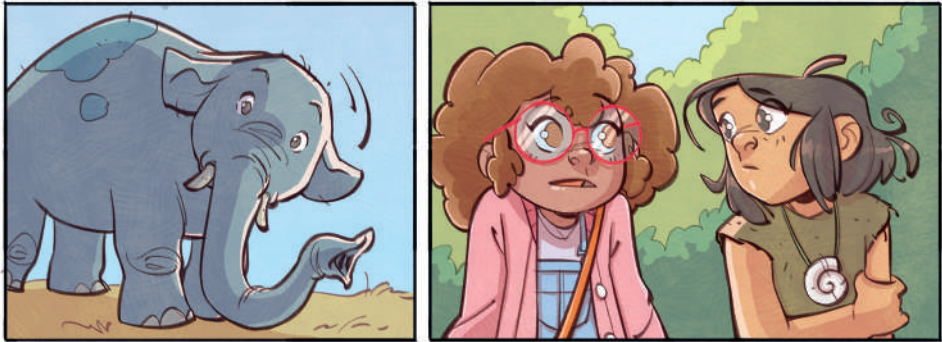
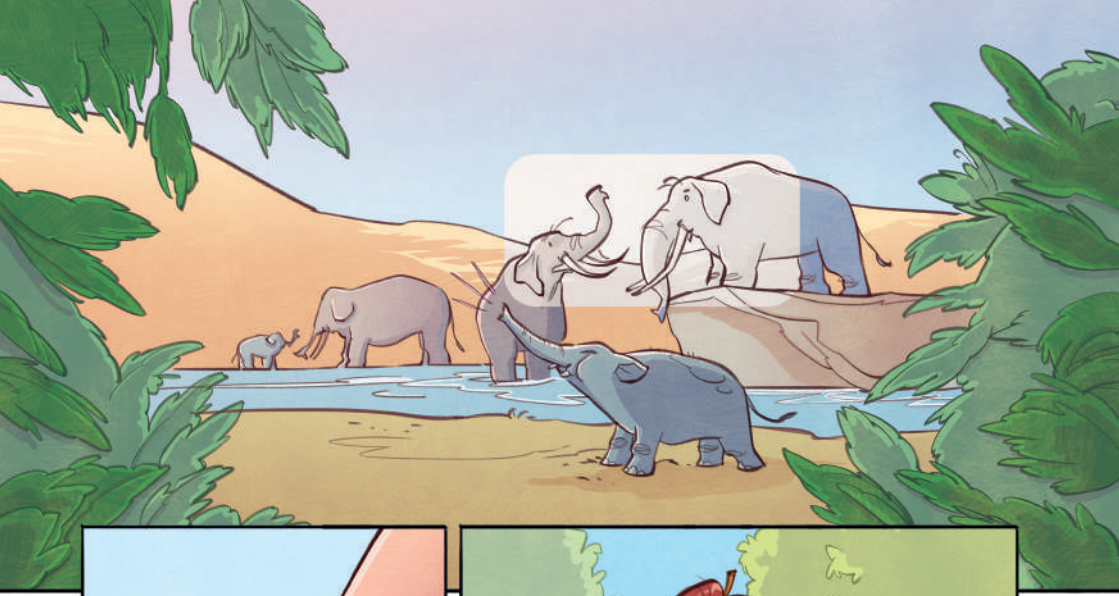


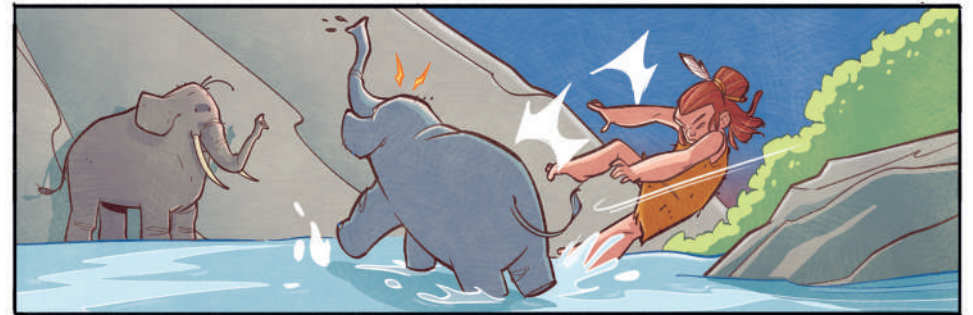
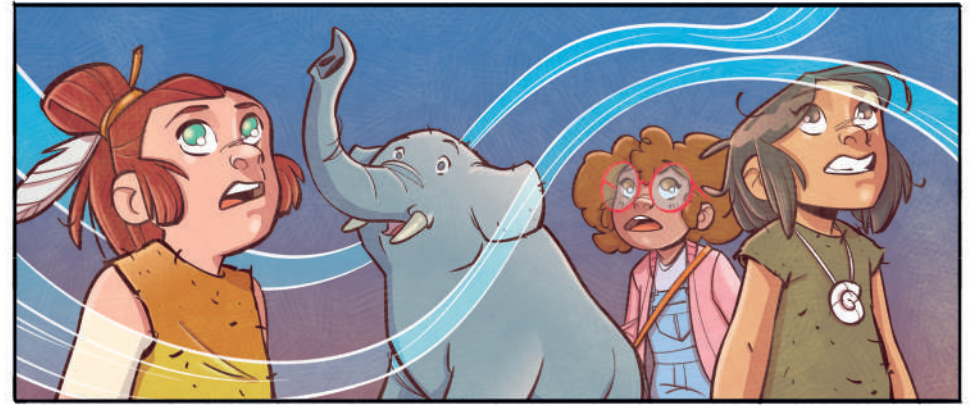
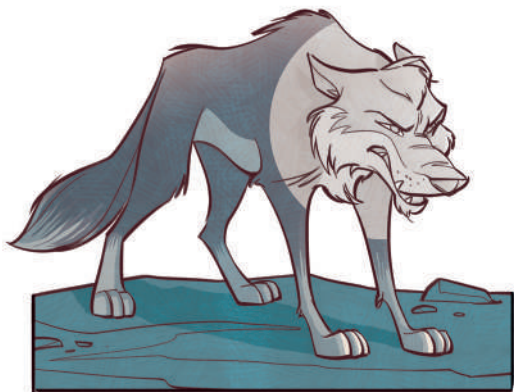
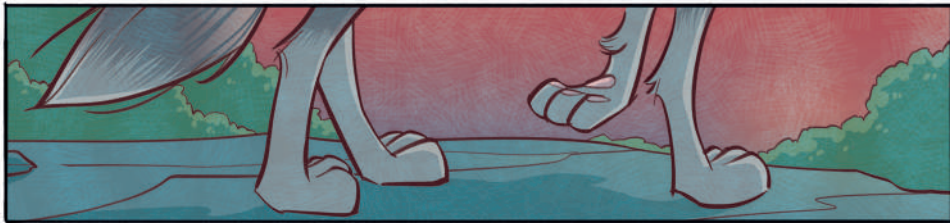
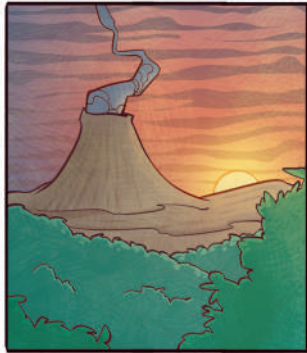
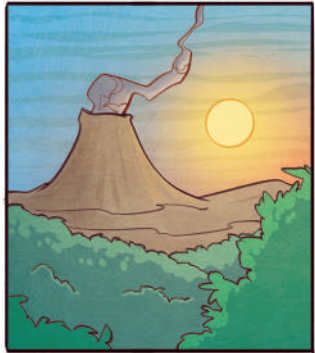
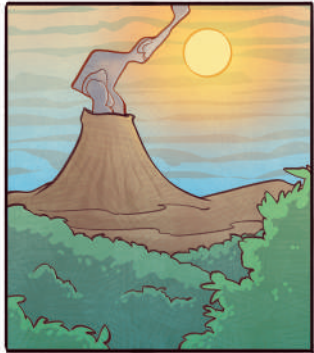




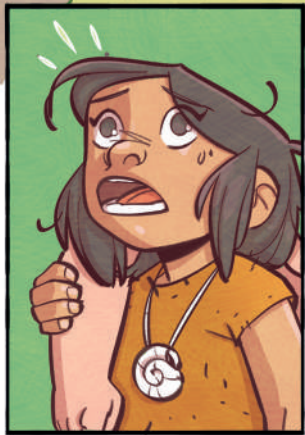


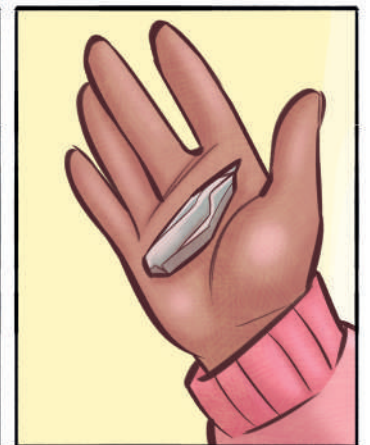
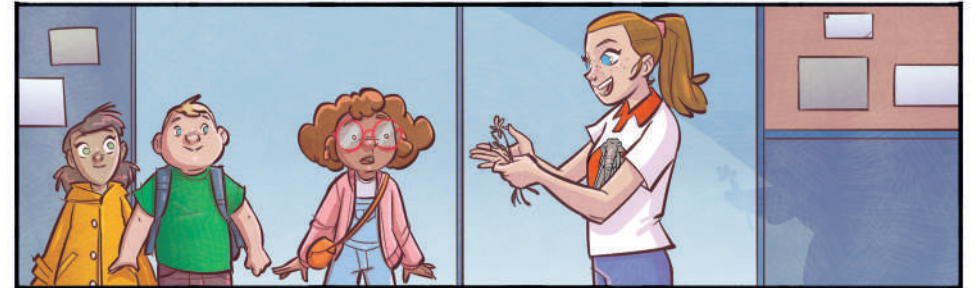
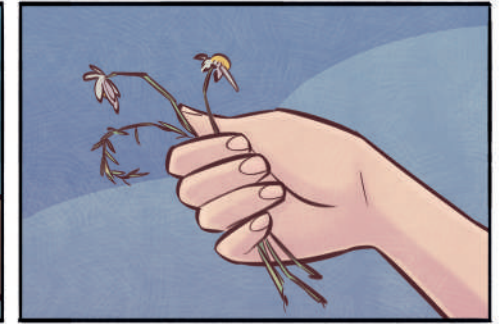
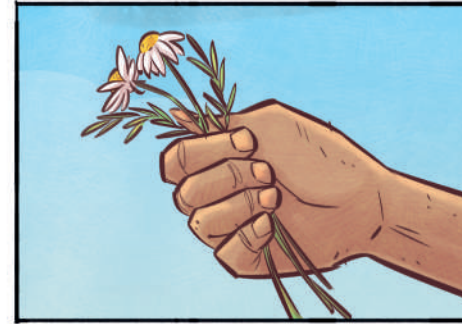
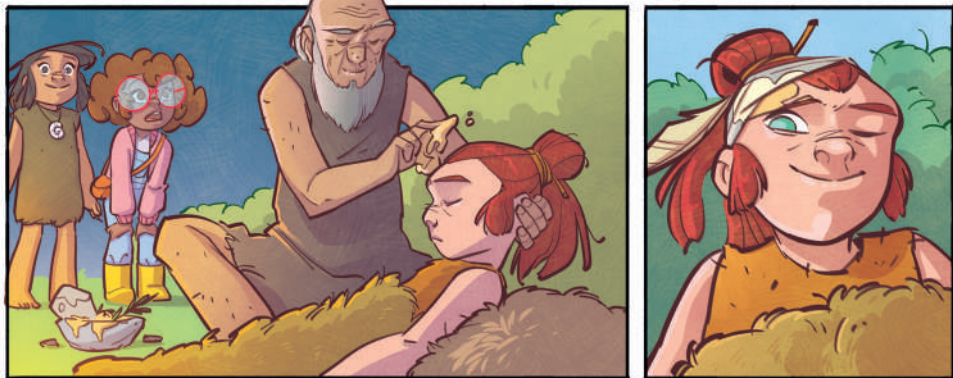










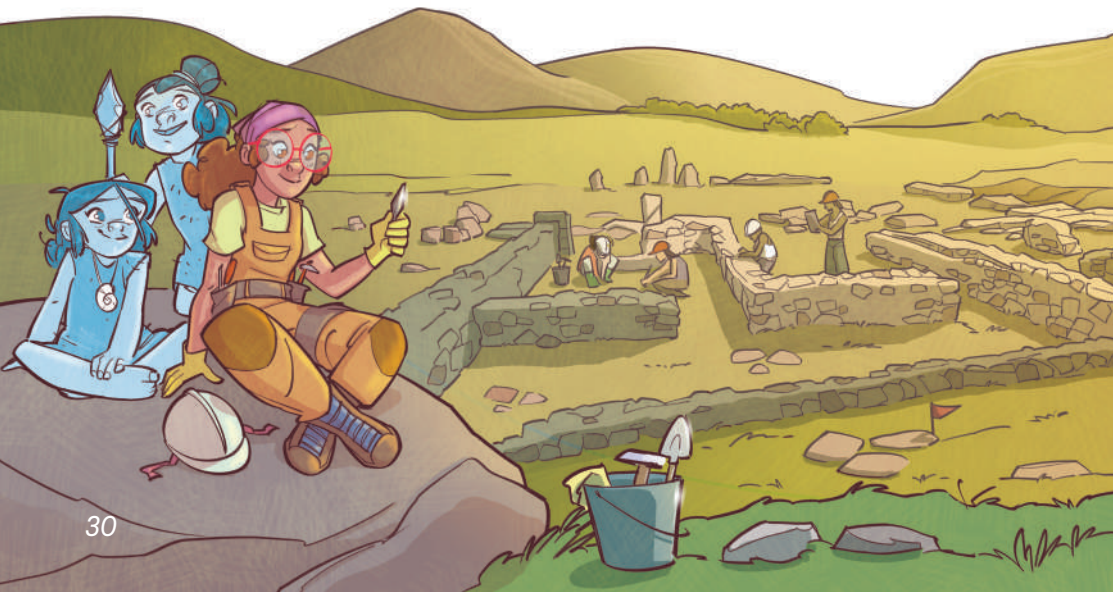




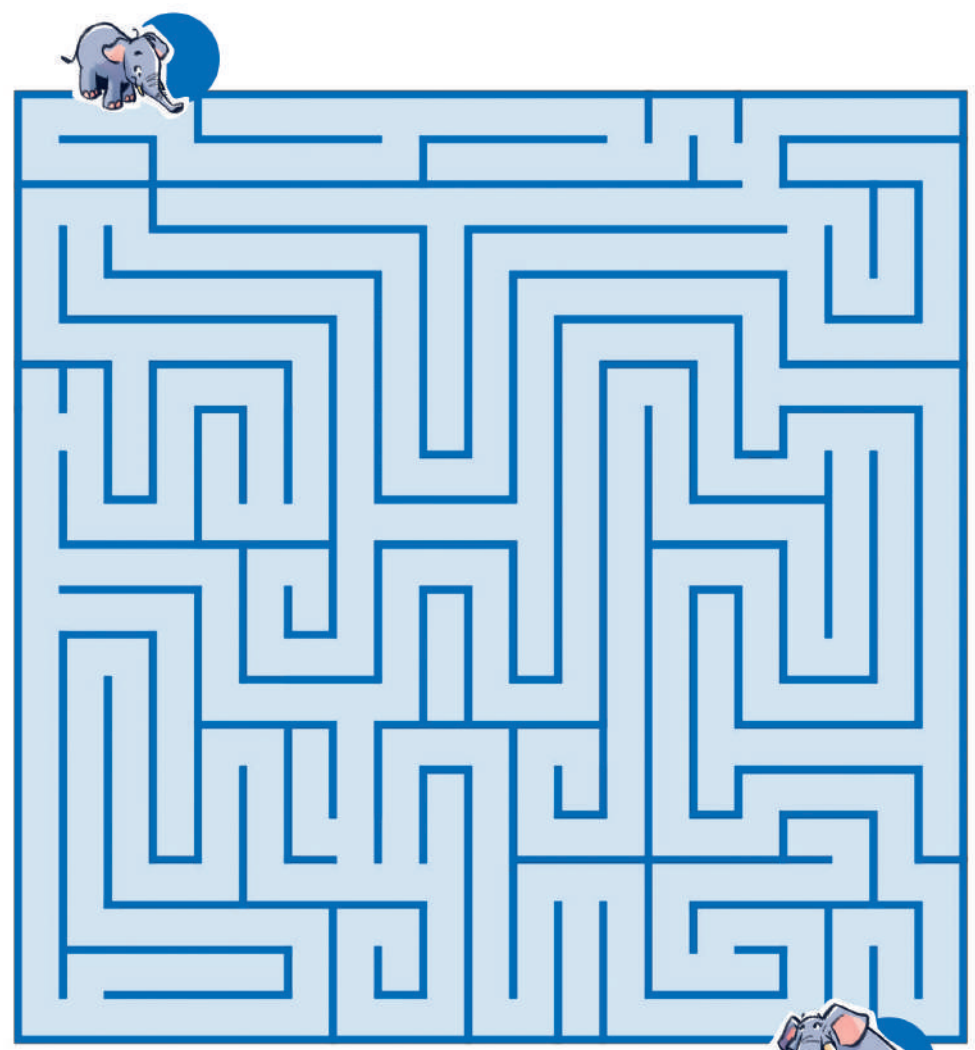
*Grazie per averci accompagnato fin qui.
La nostra avventura preistorica non è ancora finita...
Ora tocca a te!*



*Thank you for bringing us this far.
Our prehistoric adventure isn't over yet...
Now it's your turn!*

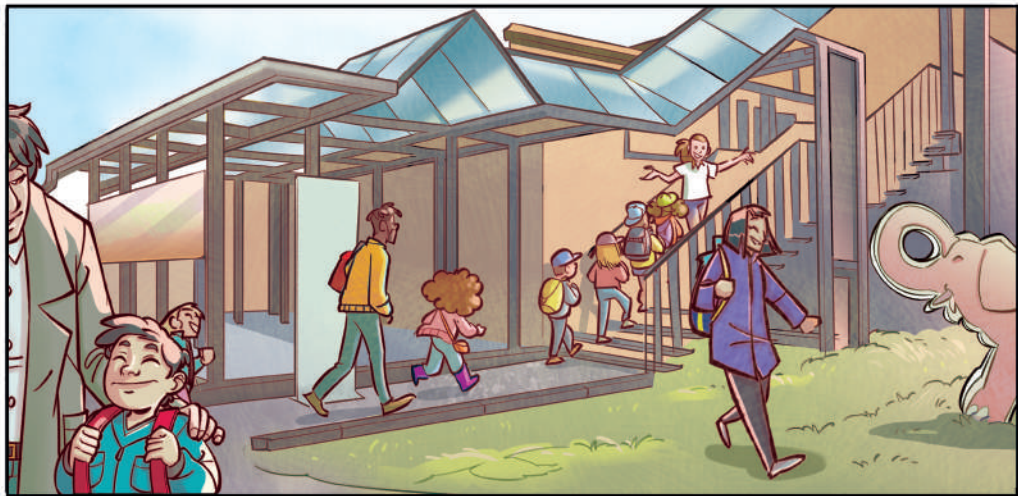


Colora tu! Time to colour!



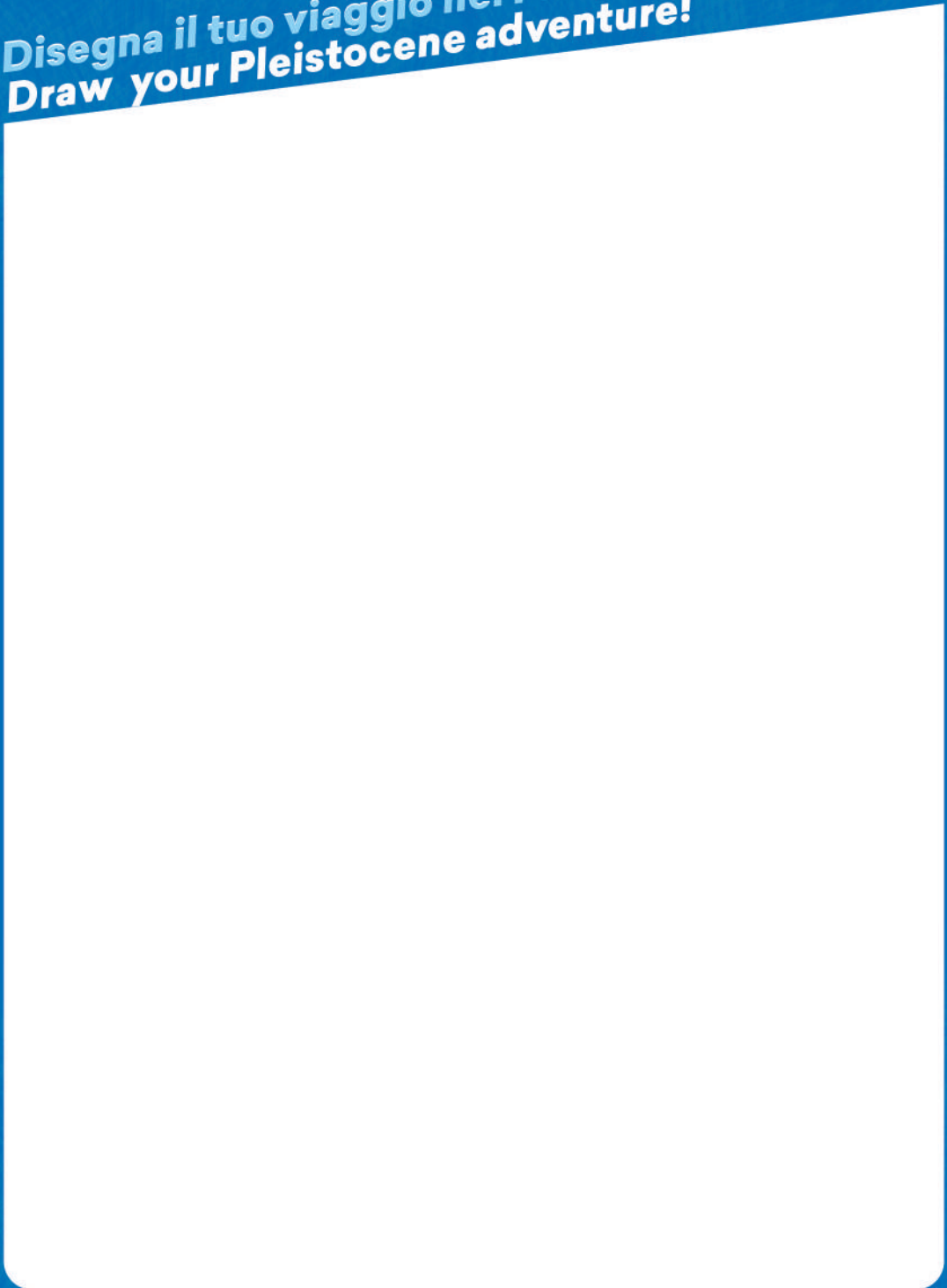
Aiuta l'elefantino a tornare dalla mamma!
Help the little elephant find its way back to Mommy!

Trova le 10 differenze!
Find the 10 differences!

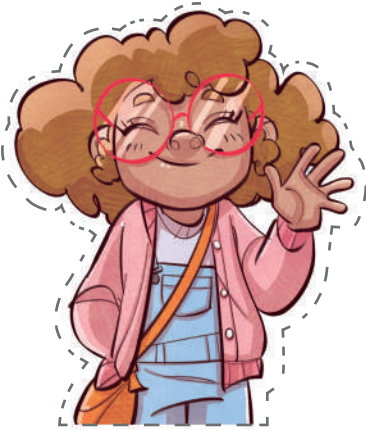


Colora gli spazi con i puntini e scopri l'immagine misteriosa!
Colour the dotted spaces and reveal the mystery picture!

Disegna il tuo viaggio nel Pleistocene!
Draw your Pleistocene adventure!



Ritaglia e attacca le immagini dove vuoi!
Cut and paste the pictures wherever you want!






Nel **1981**, durante lavori urbanistici nel quartiere romano di Rebibbia-Casal de' Pazzi, riaffiora un **alveo fluviale preistorico**. Gli scavi archeologici restituiscono anche migliaia di fossili e di strumenti realizzati da specie umane ormai estinte. Proprio qui oggi è possibile visitare gratuitamente il Museo di Casal de' Pazzi, un luogo interattivo, accessibile e inclusivo.


In **1981**, during urban development works in the Roman district of Rebibbia-Casal de' Pazzi, a **prehistoric riverbed** came to light. Archaeological excavations also uncovered thousands of fossils and tools made by now-extinct human species. Today, the Casal de' Pazzi Museum can be visited for free, offering an interactive, accessible, and inclusive experience.

Museo di Casal de' Pazzi

Via E. Galbani n. 6, 00156 - Roma

 +3906671077007

 info@museocasaldepazzi.it

 <https://www.facebook.com/museocasaldepazzi>

*Inquadra il QR code per scoprire altri contenuti!
Scan the QR code for more content!*

